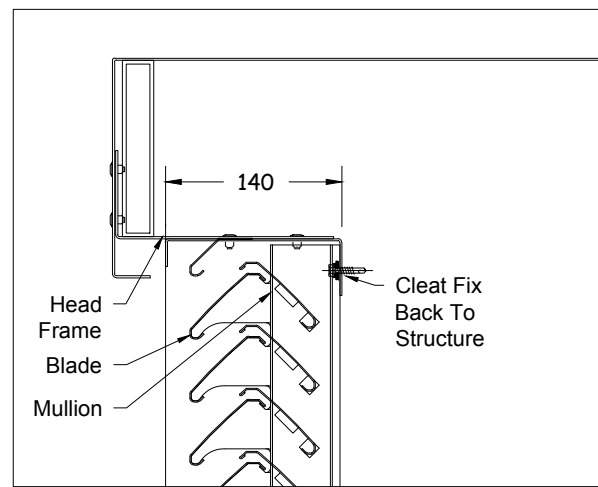
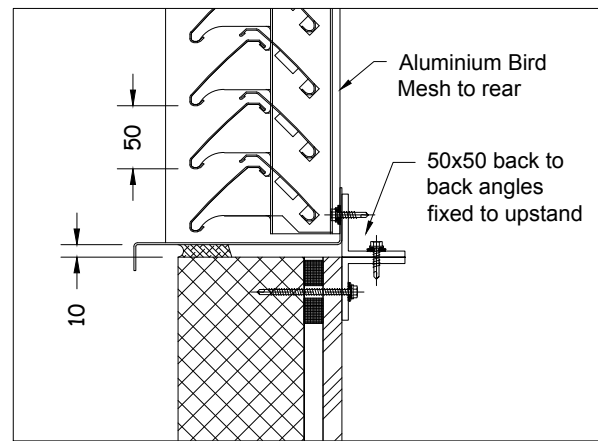


All rights reserved. No part of this document may be reproduced, stored in a retrieval system or transmitted in any form or by any means, electronic, mechanical, copying, recording or otherwise without prior written permission of ALPS LTD.

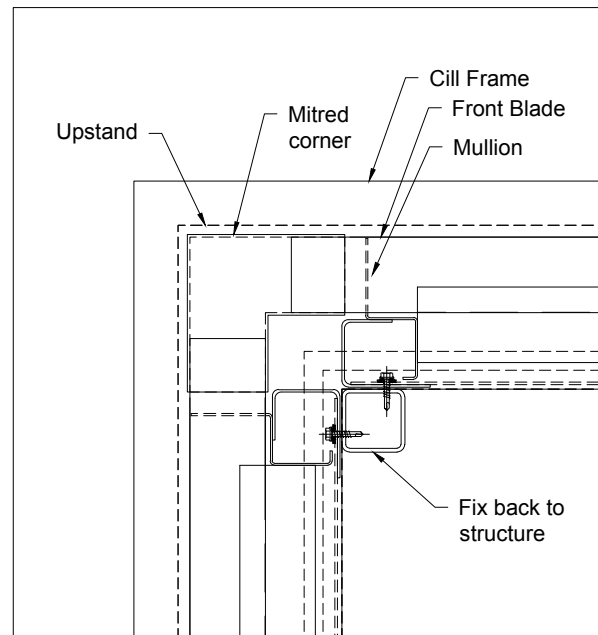
| DATE | REV | REVISION DESCRIPTION |
|------|-----|----------------------|
| | | |



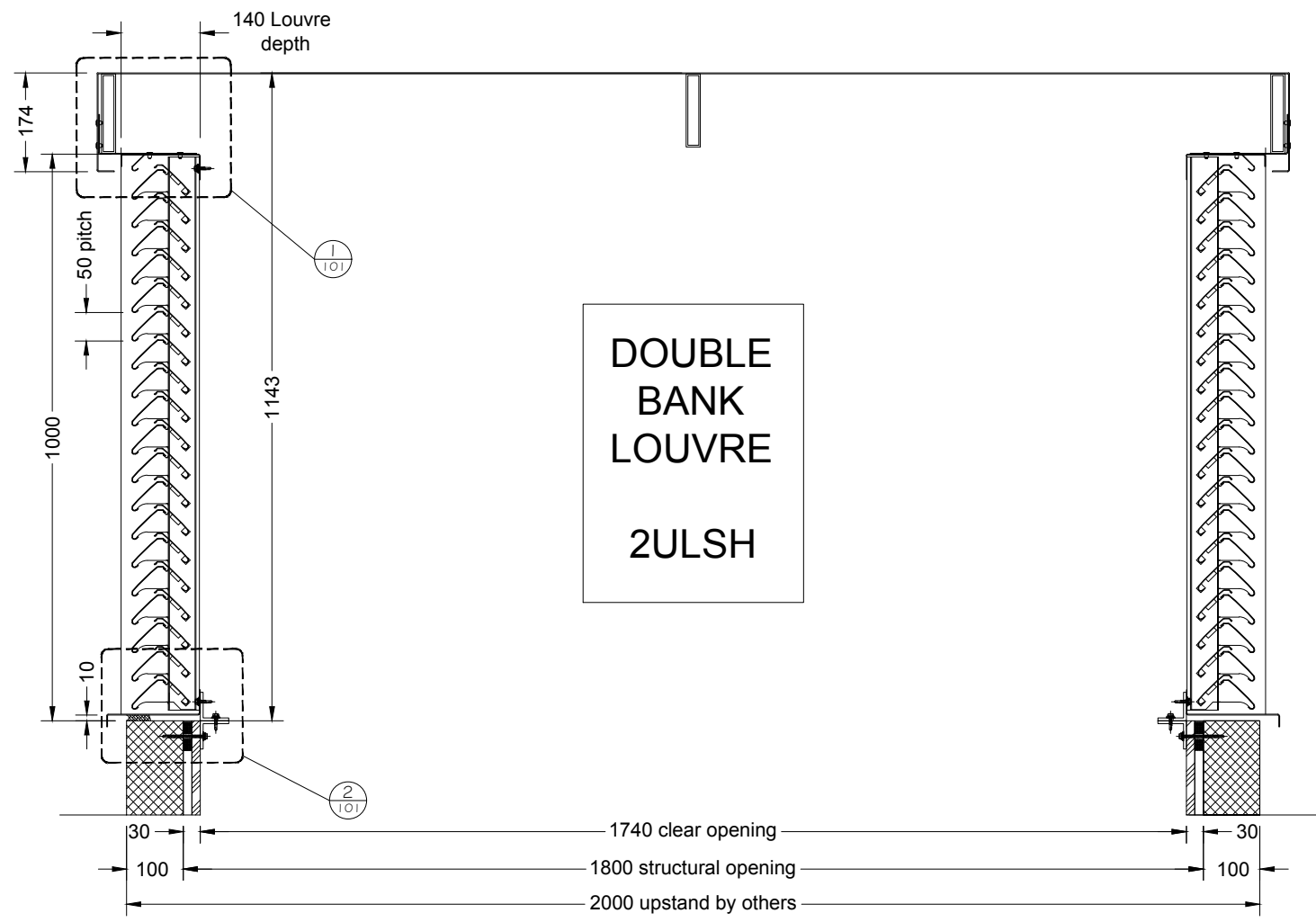
1 Detail
Scale: 1:3 (A1)



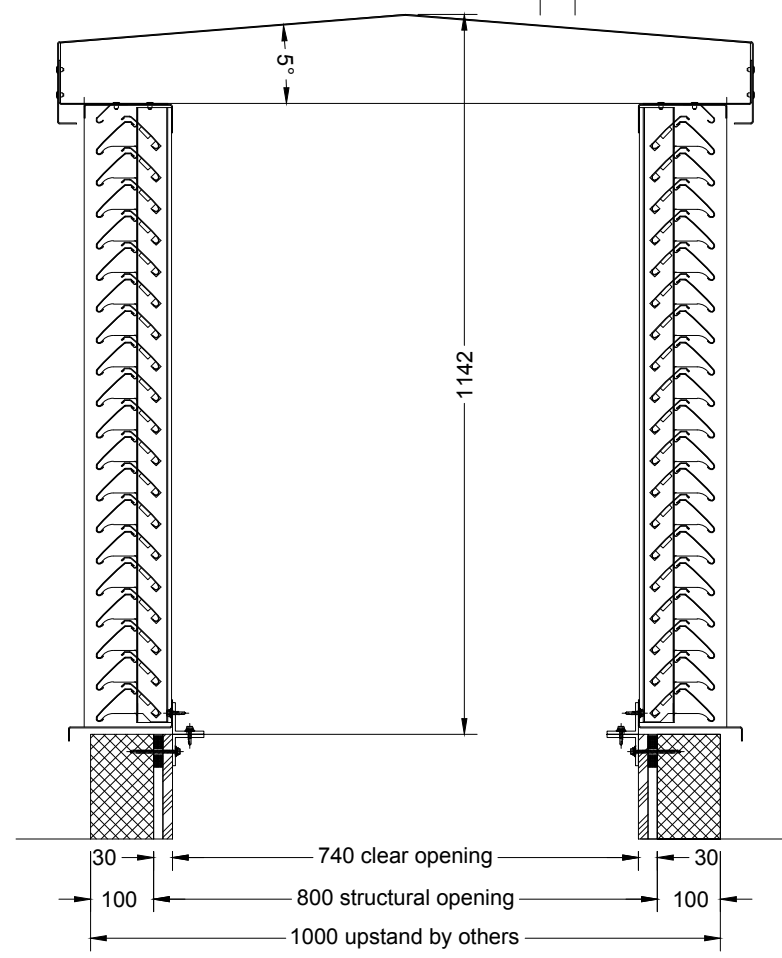
2 Detail
Scale: 1:3 (A1)



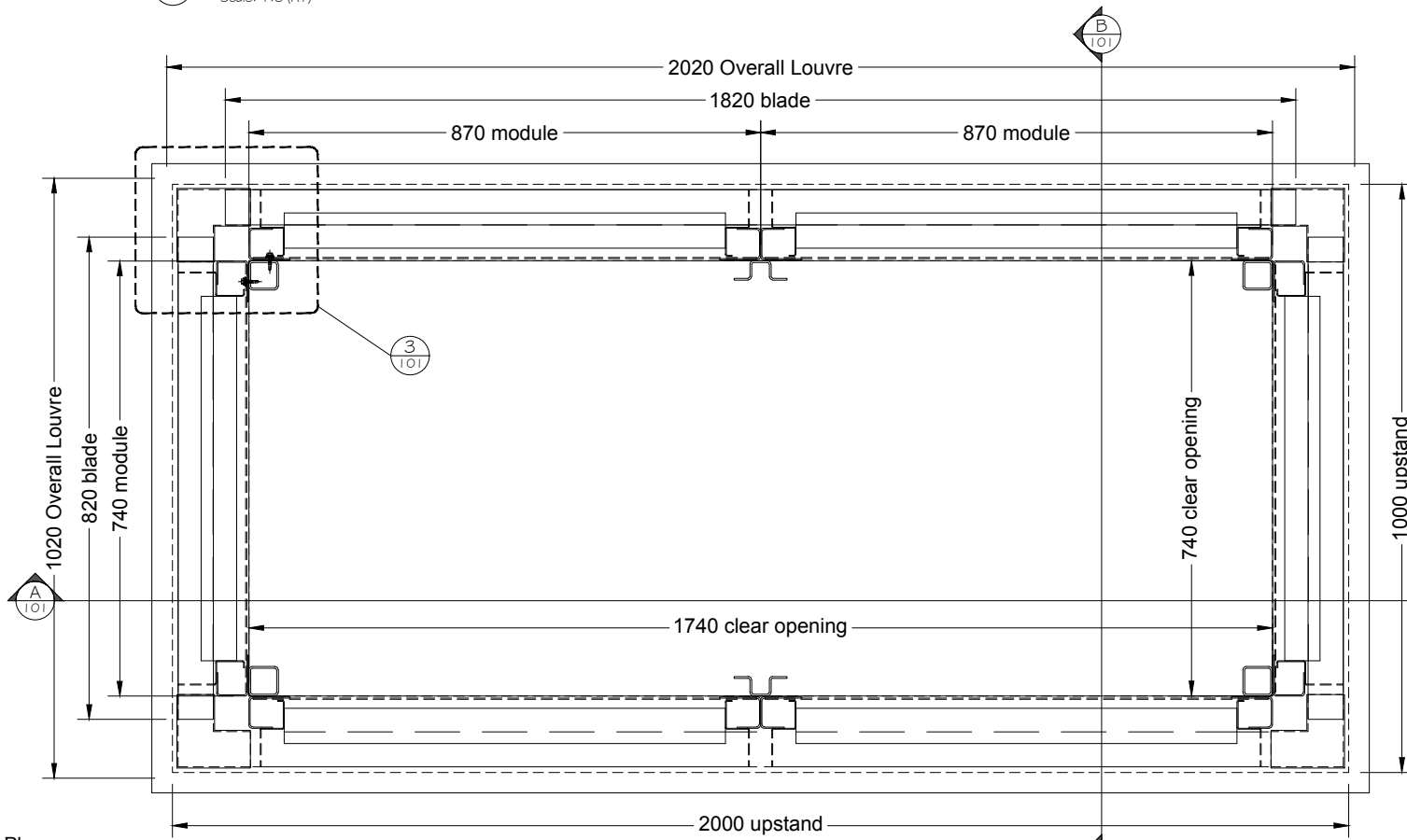
3 Detail
Scale: 1:3 (A1)



Section AA
Scale: 1:6 (A1)



Section BB
Scale: 1:6 (A1)



Plan
Scale: 1:6 (A1)

DOUBLE BANK LOUVRE
2ULSH

NOTES

Louvres and mullions to be manufactured in aluminium to EN458, EN515, EN573.

Stoved polyester powder paint, colour RAL (TBC) at 30% gloss.

PARTIAL coverage - Blades, Side frames and Cills to be PPC finished.

All Louvre Parts to be supplied in piece format for installation on site.

Design, supply and erection of Steelwork by OTHERS unless noted otherwise.

Bright Zinc Plated Nut Sets & self tapping screws or similar approved fixings by ALPS.

Barrier/isolation tape to be used between all dissimilar metals.

Dimensions are deemed correct for manufacture unless client advises otherwise.

All building apertures are to be +/- 5mm of agreed dimensions for fitting equipment.

This scheme is based on a wind loading of 1.2kN/sqm.



Architectural Louvre Products & Services Limited
Unit 3, 12 Downtney Road
Havant, PO9 2NJ

t 02392 480 055 w alpslouvres.co.uk

| | |
|------------|--|
| CUSTOMER | |
| PROJECT | |
| ALPS REF | |
| TITLE | 2ULSH Turret to plant room |
| DRAWN | IT |
| DATE | 16-10-15 |
| SCALE | NTS |
| STATUS | <input checked="" type="checkbox"/> Approval <input type="checkbox"/> Construction <input type="checkbox"/> As Built |
| DRAWING No | 101 |
| ISSUE | A1 |