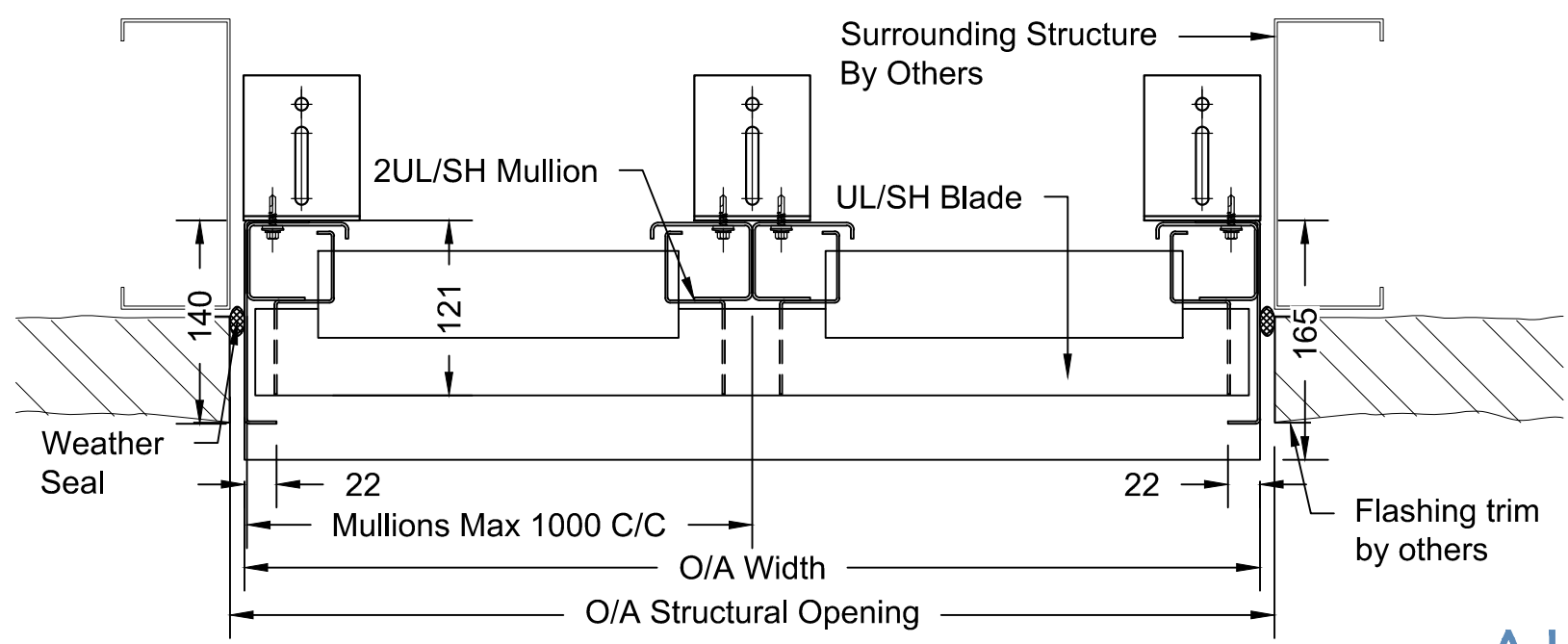


**Typical 2ULSH Section**



**Typical 2ULSH Plan**



Architectural Louvre Products & Services Limited  
Unit 3, 12 Downley Road  
Havant, PO9 2NJ

t 02392 480 055 w [alpslouvres.co.uk](http://alpslouvres.co.uk)

TITLE 2UL/SH TYPICAL LOUVRE INTO CLADDING	
DRAWN WB	DATE 06.06.2017
<b>INFORMATION ONLY</b>	
DRAWING No ALPS-UL-2UL-ZZ-SH-SAL-2D-0003	ISSUE A1

A3

ALL DIMENSIONS IN mm  
(C) Copyright Architectural Louvre Products And Services Limited 2017  
All rights reserved. No part of this document may be reproduced, stored in a retrieval system or transmitted in any form or by any means, electronic, mechanical, copying, recording or otherwise without prior written permission of ALPS LTD.