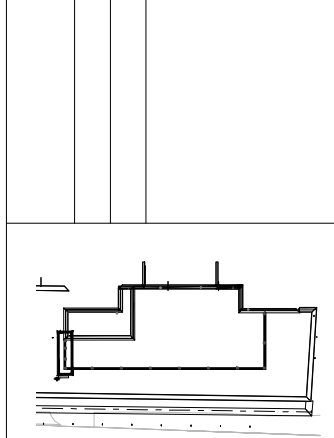


(C) Copyright Architectural Facade Solutions Limited 2016
 All rights reserved. No part of this document may be reproduced, stored in a retrieval system or transmitted in any form or by any means, electronic, mechanical, copying, recording or otherwise without prior written permission of AFS LTD.

DATE	ISS	DRN	DESCRIPTION
06.07.18	A2	PJ	Issued for APPROVAL Updated to revised steelwork plan
17.01.19	AB	PJ	AS BUILT Issue



1. NOTES - General Notes

- Blades and side frames to be manufactured in aluminium with plastic blade slip.
- Stoved polyester powder paint, colour RAL 7012 AND GLOSS 30% (MATT FINISH)
- Blades and side frames to be PPC FINISHED
- Blade slipers NATURAL FINISH plastic
- Support frame and fixing brackets to be M11 FINISH
- All Drive Coil parts to be supplied in breakdown format for installation on site

2. NOTES- Acoustic Louvre

- Acoustic louvre panels to be manufactured in galvanised steel
- Stoved polyester powder paint, colour RAL 7012 AND GLOSS 30% (MATT FINISH)
- ~~RAL 9014 AND GLOSS 50% (SATIN FINISH)~~
- PARTIAL coverage - Blades and Side frames only to be PPC finished.
- All acoustic louvre panels (including doors) to be pre assembled and supplied in modular format for installation on site.

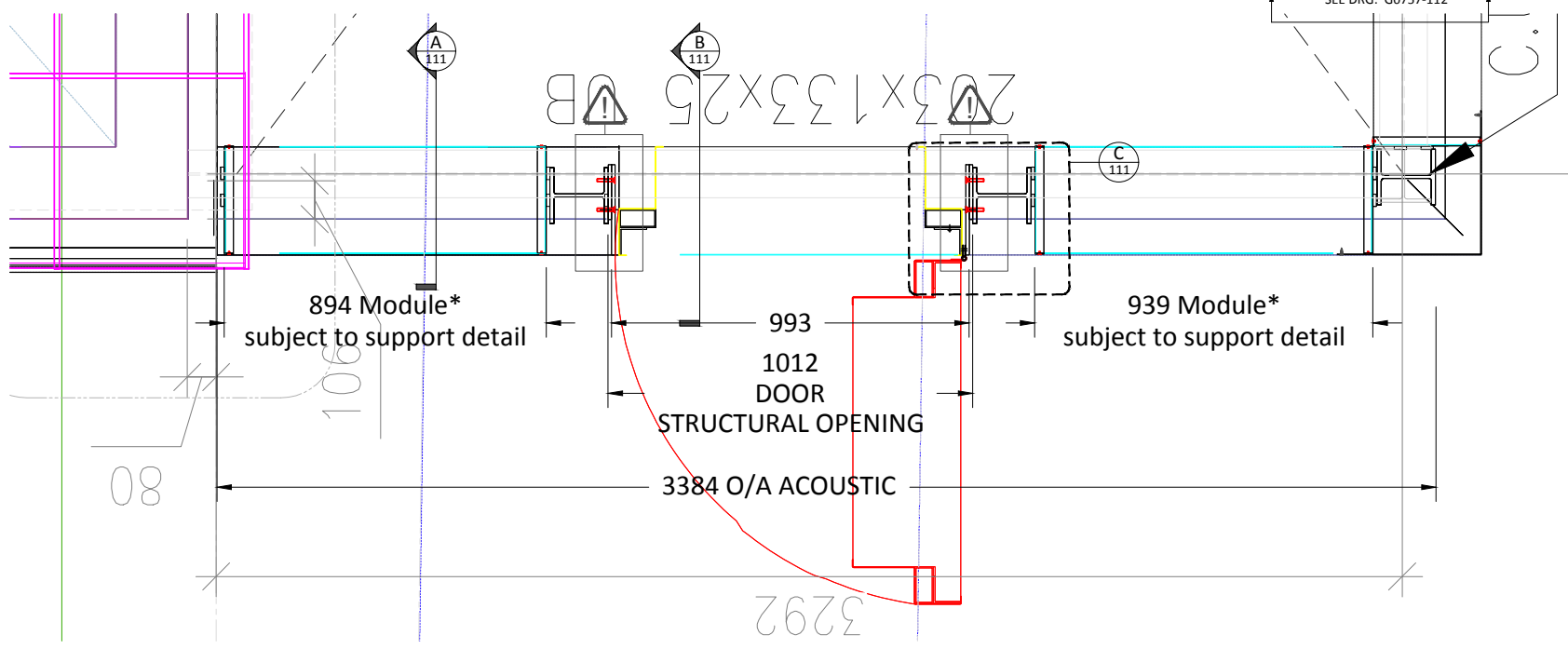
3. NOTES- General Notes

- Design, supply and erection of Steelwork by OTHERS unless noted otherwise.
- TEK Screws to be carbon steel. Nut Bolts and Washers to be A2 Stainless Steel.
- Door Ironmongery will be euro-cylinder door lock with thumb turn and gas strut as standard.
- Barrier/isolation tape to be used between all dissimilar metals.
- Dimensions are deemed correct for manufacture unless client advises otherwise.
- All building apertures are to be +/- 5mm of agreed dimensions for fitting equipment.
- Pack out locally as required



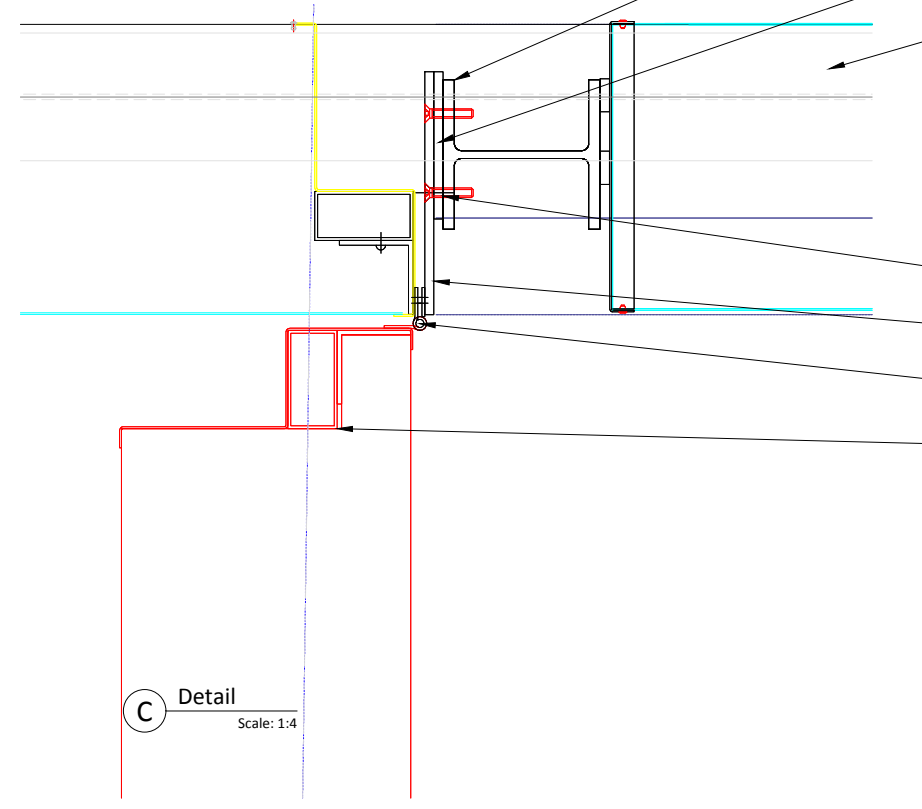
CUSTOMER	GILBERT ASH
PROJECT	PREMIER INN 1 GILTSBUR STREET WEST SMITHFIELD, LONDON, EC1A 9HB
AFS REF	G0757
TITLE	AC300 ACOUSTIC LOUVRE ROOF AREA PLAN, SECTION & DETAILS

DRAWN	PJ	CHECKED	
DATE	30.11.17		
SCALE	1:10 @ A1		
STATUS	<input type="checkbox"/> Approval <input type="checkbox"/> Construction <input checked="" type="checkbox"/> As Built		
DRAWING No	G0757-111	ISSUE	AB

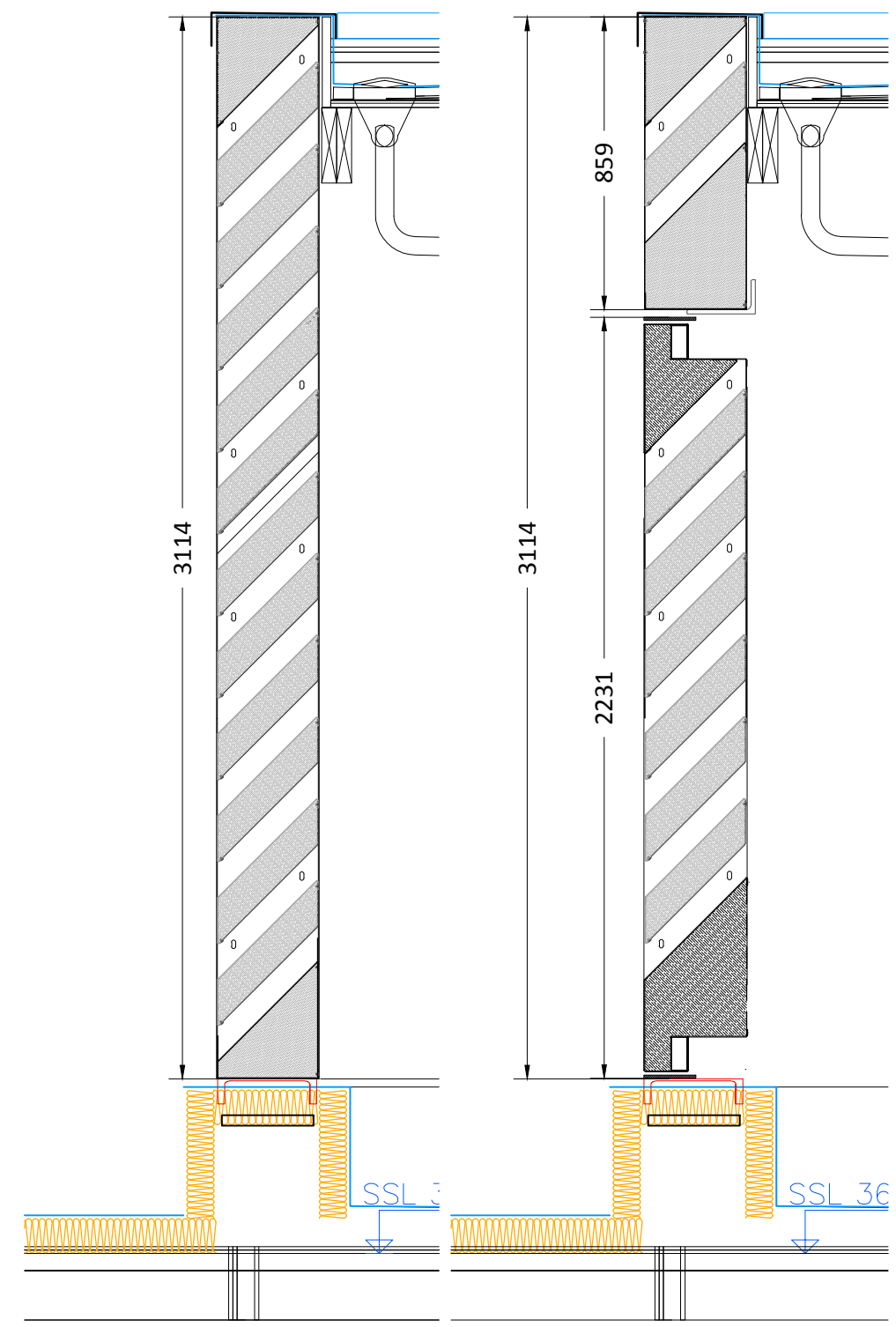


1 Plan
Scale: 1:10

- STEEL SUPPORT REQUIRED to be supplied and installed by OTHERS.
- 10mm SPACER
- AC300 ACOUSTIC MODULE
- COUNTERSUNK FIXING
- DOOR PLATE FRAME
- DOOR HINGE
- ACOUSTIC DOOR



C Detail
Scale: 1:4



A Section
Scale: 1:10

B Section
Scale: 1:10